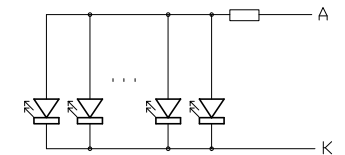
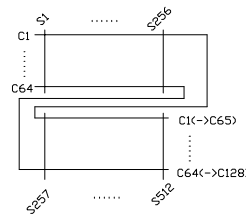


Terminal	
No.	Pin Name
1	VDD
2	VSS
3	VEE
4	CL1(LP)
5	DF
6	DISP/OFF
7	NC
8	ID68(YD)
9	CL2(XCK)
10	NC
11	D0
12	D1
13	D2
14	D3
15	LEDA
16	LEDK

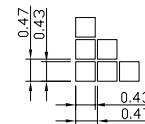


Backlight Circuit  
Scale=free

- Note:
- \*1. LCD Display Type : STN-Blue, Negative, Transmissive
  - \*2. Viewing Direction : 6H
  - \*3. Duty : 1/65; Bias : 1/9; Vop : 13.8V
  - \*4. Operating Voltage : 5.0V
  - \*5. Operating Temperature : 0°C~50°C
  - \*6. Storage Temperature : -20°C~60°C
  - \*7. Control/Drive IC : NT7086 or RA0086
  - \*8. Backlight : White LED(5.0V-7LED)



Panel Wiring Details  
Scale=free



Pixels Details

<b>HOT DISPLAY</b>			
Dwg Title		REV	
HTM256128C		A0	
Dwg No.		Date	
RD-D-014		2012-10-18	
Scale	Unit	Tol.	
1/3	mm	±0.2	
Drawn	Checked	Approved	
RD01	Andyi		